



437 Old Chester Road, Birkenhead, CH42 2DU Offers In The Region Of £85,000



Nestled on the charming Old Chester Road in Birkenhead, this terrace house presents an excellent opportunity for both first-time buyers and those seeking a comfortable family home. The property boasts a prime location, offering easy access to local amenities, schools, and transport links, making it an ideal choice for those who value convenience and community.

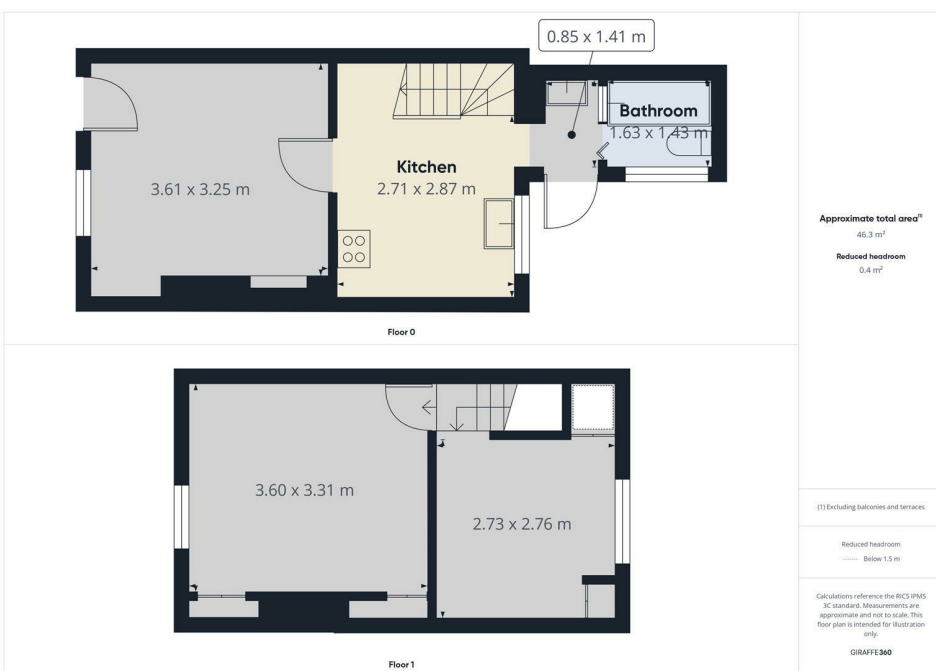
The end terrace position allows for additional natural light to flood the living spaces, creating a bright and welcoming environment. The garden, which is a valuable asset, offers a private outdoor area.

This property is not just a house; it is a home that offers the potential for personalisation and growth. With its appealing location and charming features, it is sure to attract interest from a variety of buyers. Do not miss the chance to make this lovely end terrace house your own, where you can create lasting memories in a vibrant and friendly neighbourhood.

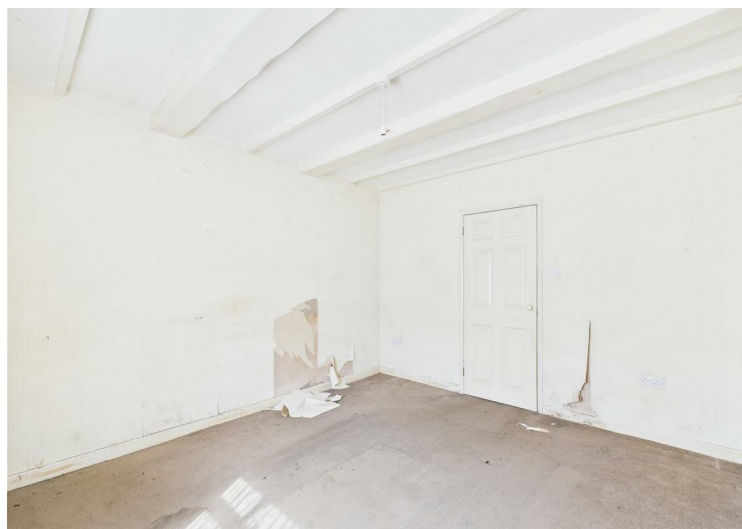
- Two Bedrooms
- Mid Terrace Property
- One Reception Room
- Kitchen
- Bathroom
- Rear Yard
- Double Glazing
- Gas Central Heating
- In Need Modernization
- EPC Rating D

Viewing

To arrange a viewing on this property or require further information please contact one of our team on 0151 638 6313



Energy Efficiency Rating		
	Current	Potential
Vary energy efficient - lower running costs		
(92 plus) A		
(81-91) B		
(69-80) C		
(55-68) D		
(39-54) E		
(21-38) F		
(1-20) G		
Not energy efficient - higher running costs		
England & Wales		EU Directive 2002/91/EC



These particulars, whilst believed to be accurate are set out as a general outline only for guidance and do not constitute any part of an offer or contract. Intending purchasers should not rely on them as statements of representation of fact, but must satisfy themselves by inspection or otherwise as to their accuracy. No person in this firm's employment has the authority to make or give any representation or warranty in respect of the property.